

## Program Description

The Harvey County Livestock Association would like to invite you & your spouse to attend the Annual Harvey County Livestock Association Steak & Mountain Oyster fry and Annual Meeting.

This year the event will be held at the Harvey County Fairgrounds 4-H Building, 800 West 1st, Newton. See the schedule for times.

The Livestock association is open to members of all species of livestock & we look forward to having you attend. We realize the changing roles in the livestock & agriculture world, and as the women's roll changes in the industry, our goal is to include them in our association.

## Harvey Co. Livestock Association Dinner

*Thursday, March 1, 2018*

### Schedule

**6:00 pm**

Registration & Social Time

**6:30 pm**

***Steak & Mountain Oyster Meal***

Served with all the trimmings

***Entertainment during the meal:***  
**Amber Goldermann**

**Presentations by Speakers**

**Harvey County Livestock Association Annual meeting**

**Harvey County  
Livestock  
Association  
Annual Steak &  
Mountain Oyster  
Fry**

**March 1, 2018**

**Hv Co. Fairgrounds  
4-H Building  
800 W. 1st  
Newton, KS**

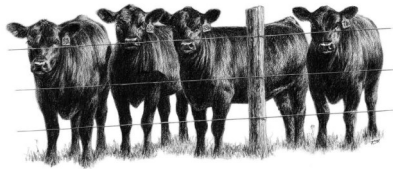
### **Hv Co Livestock Association**

*Pat Wendling, President*

*\*Annual meeting following  
the program—You are invited  
to join the Association at Dinner  
& stay for the meeting.*



**K-STATE**  
Research and Extension



## Meet the Entertainment:

### Amber Golderman

Amber is a country music artist with a touch of everything else. She picked up the guitar at 17 and began pursuing her music career. She is inspired by many artists and covers everything from Merle Haggard to Red Hot Chili Peppers and Miranda Lambert to 4 Non Blondes. A few of her greatest achievements include opening for Sunny Seeney and Ned LeDoux.



## MEET THE SPEAKERS

### Jaymelynn K Farney

Kansas State University Assistant  
Professor / Extension Specialist  
Grazing Cover Crops Precautions

- How to safely rotate livestock on Cover Crops
- What types of cover crops to plant for rotation

### Ken Selzer

Kansas Insurance Commissioner

Ken was elected as the Kansas Insurance Commissioner in 2014 and is running for Governor. He is very active in the Agriculture world and would like to visit with you about needs of the area. Ken grew up in McPherson and Marion counties and is a graduate of Kansas State University.

### Josh Bieghler

Harvey County Dispatch  
Harvey County Dispatch is updating the Livestock information and registry for Harvey County from the 1970's. They would like to work with area livestock owners to have accurate records of ownership, location and number of animals.

Registration is due by  
**February 23, 2018**

**Pay at the door**  
**\$25 couple, \$15 single**

### To Register

Contact the Harvey County Extension  
office at 316-284-6930 or email  
Ryan Flaming at [flaming@ksu.edu](mailto:flaming@ksu.edu) or  
Debbie at [dchurch@ksu.edu](mailto:dchurch@ksu.edu)

**Thank you to MKC**  
**for grilling the steaks**  
**Meal prepared by Harvey**  
**County Livestock**  
**Association board members**



**K-STATE**  
Research and Extension

Harvey County

800 N Main, Newton, KS. 67114  
316-284-6930

Ryan Flaming, Agriculture Agent  
[www.harvey.ksu.edu](http://www.harvey.ksu.edu)

Kansas State University is committed to making its services, activities and programs accessible to all participants. If you have special requirements due to a physical, vision, or hearing disability, contact Ryan Flaming, (316) 284-6930.